



DAILY AIR MONITORING REPORT

Florence C&D Landfill – Air Monitoring

Date : 2026-04-15

Table 1 : Weather Summary

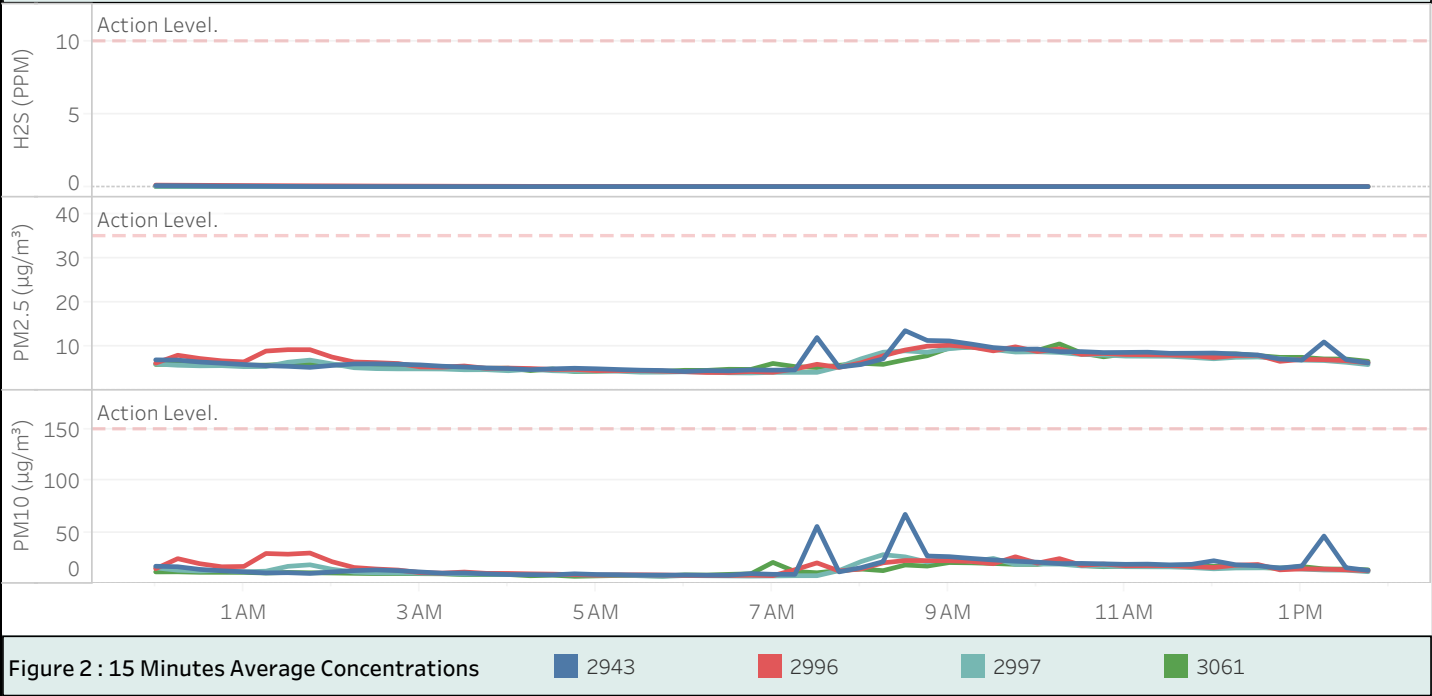
Wind Speed (MPH)	Wind Direction				Temperature (°F)	Relative Humidity (%)	Barometer (inHg)
0.112 to 7.181	2943 SE	3061 WSW	2996 SSE	2997 N	Min : 53.42 Max : 96.62	Min : 34.90 Max : 85.30	Min : 30.11 Max : 30.27

Table 2 : Monitoring Summary

Site Action Level :	PM10 : 150 µg/m ³	PM2.5 : 35 µg/m ³	H2S : 10 PPM			
AQ-SN	Avg. PM10 Daily (µg/m ³)	Max. PM10-15-min Avg (µg/m ³)	Avg. PM2.5 Daily (µg/m ³)	Max. PM2.5-15-min Avg (µg/m ³)	Avg. H2S Daily (PPM)	Max. H2S-15-min Avg (PPM)
2943	16.6	67.2	7.0	13.6	0.005	0.069
2996	15.8	29.8	6.8	10.3	0.018	0.102
2997	13.7	28.2	6.2	9.9	0.001	0.015
3061	13.0	21.5	6.5	10.6	0.000	0.003



Figure 1 : Monitoring Locations





DAILY AIR MONITORING REPORT

Florence C&D Landfill – Air Monitoring

Date : 2026-04-15

Wind Rose Chart 2943

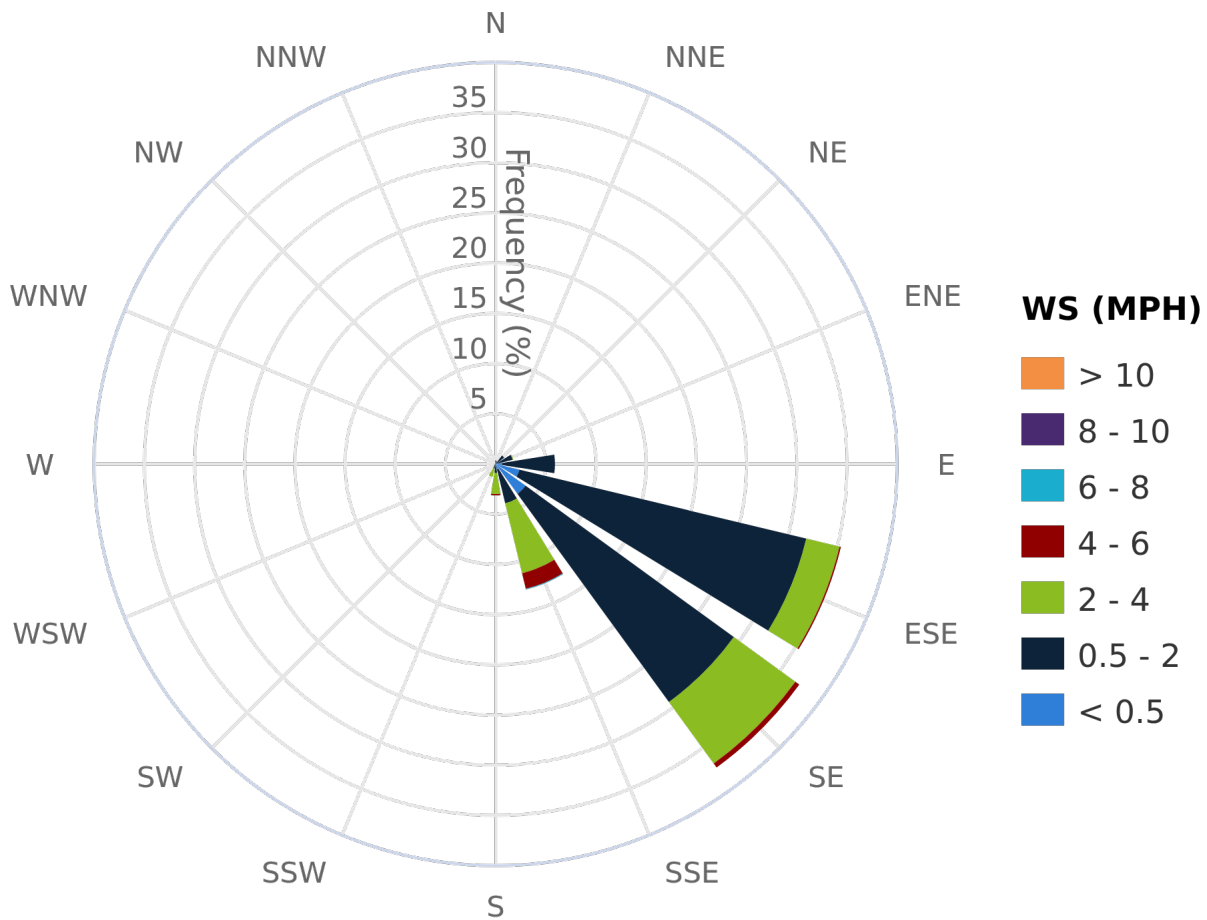


Figure 3 : Wind Rose Chart (WS in MPH)



DAILY AIR MONITORING REPORT

Florence C&D Landfill – Air Monitoring

Date : 2026-04-15

Wind Rose Chart 3061

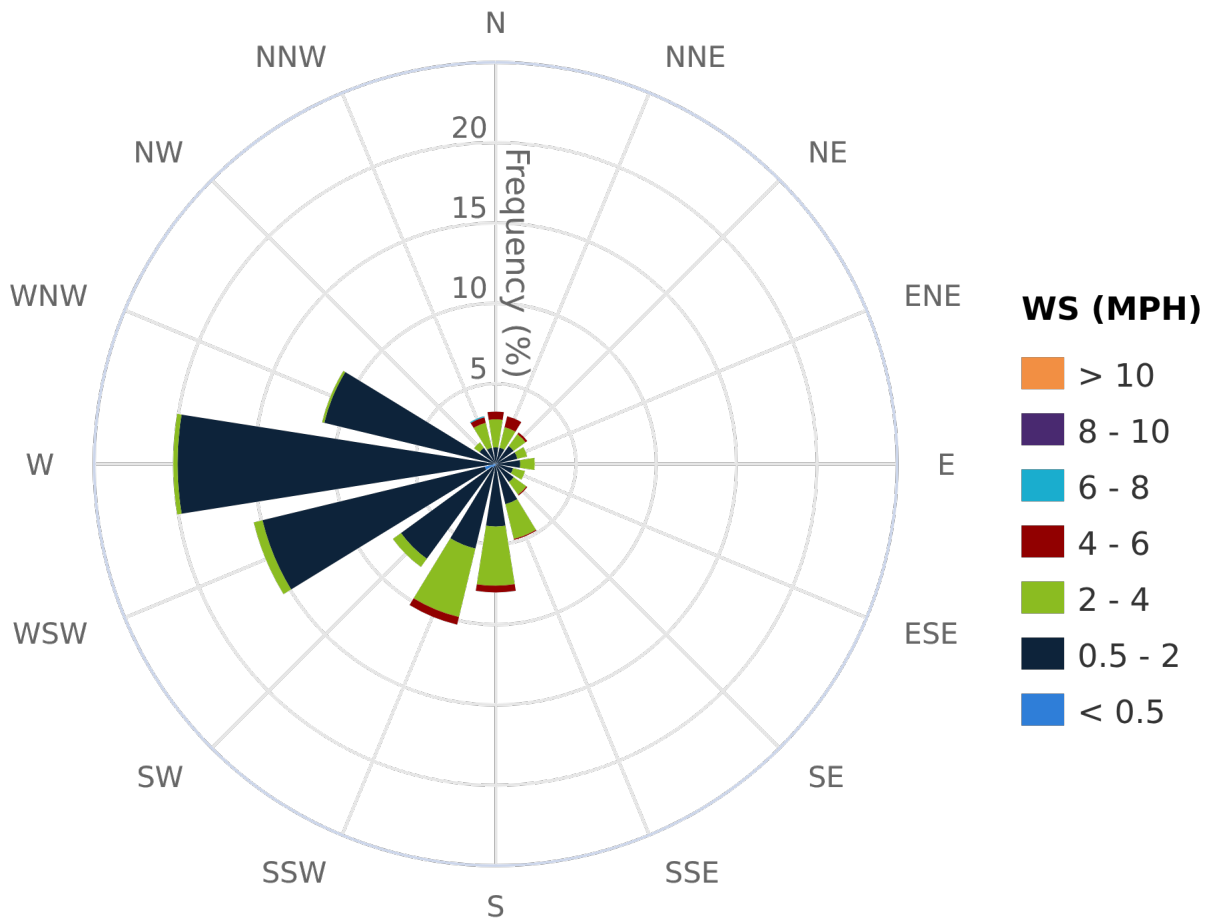


Figure 3 : Wind Rose Chart (WS in MPH)



DAILY AIR MONITORING REPORT

Florence C&D Landfill – Air Monitoring

Date : 2026-04-15

Wind Rose Chart 2996

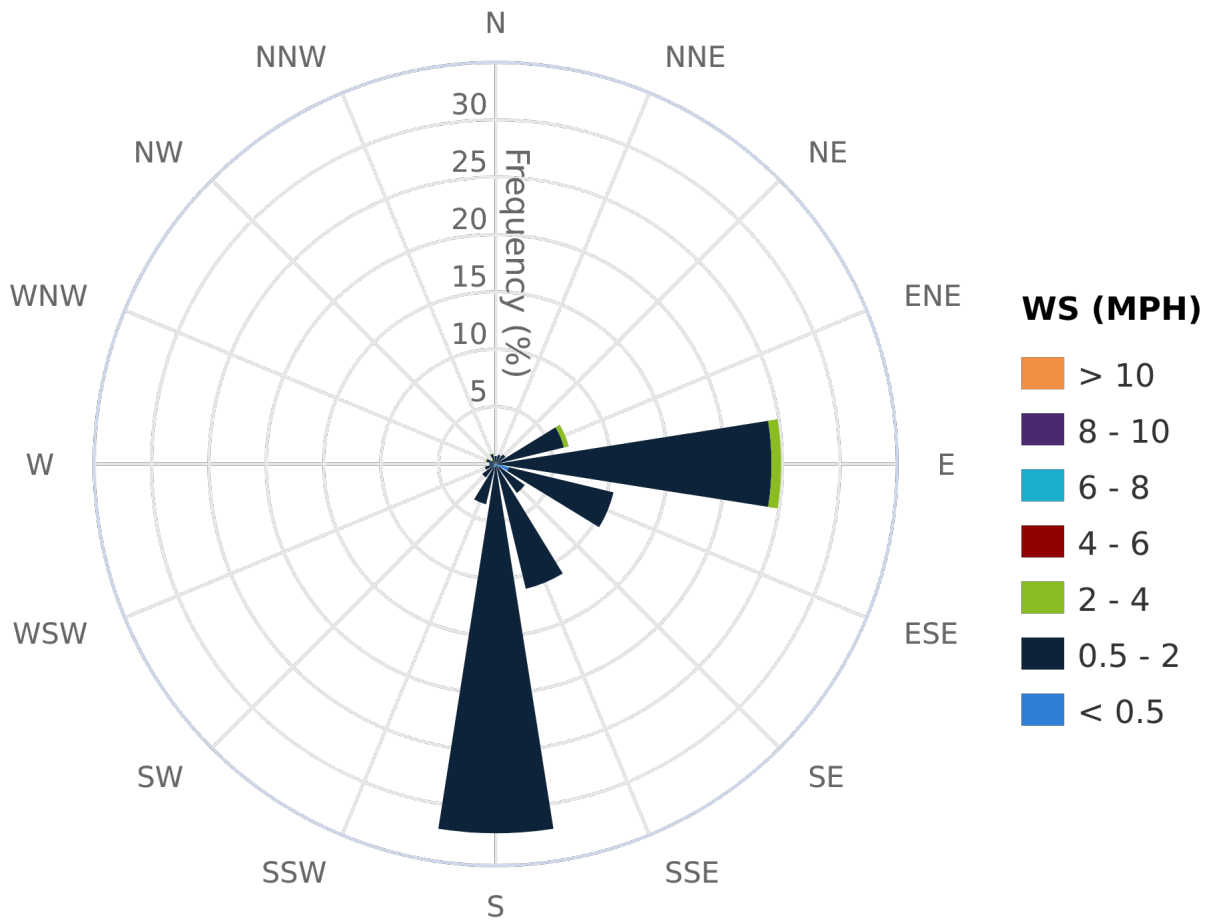


Figure 3 : Wind Rose Chart (WS in MPH)



DAILY AIR MONITORING REPORT

Florence C&D Landfill – Air Monitoring

Date : 2026-04-15

Wind Rose Chart 2997

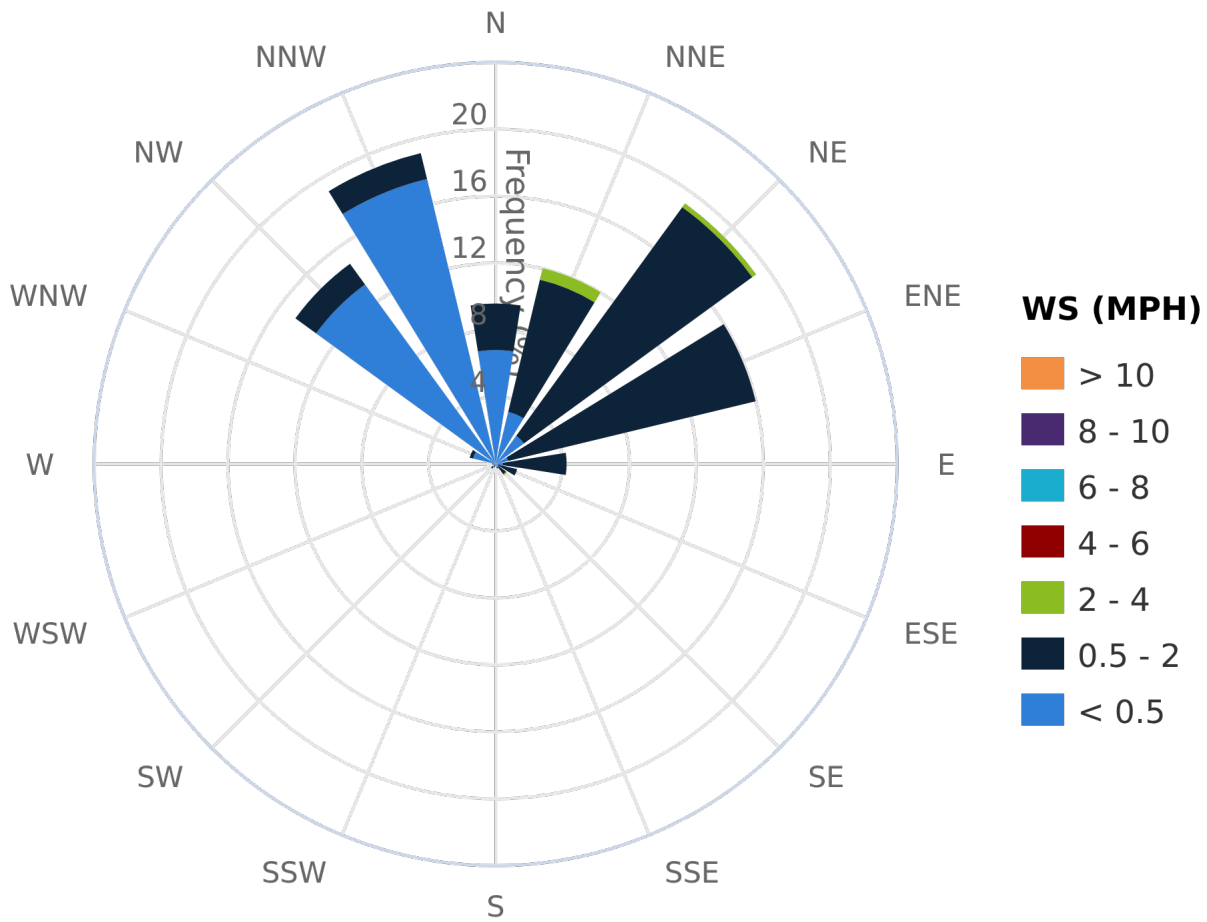


Figure 3 : Wind Rose Chart (WS in MPH)



DAILY AIR MONITORING REPORT

Florence C&D Landfill – Air Monitoring

Date : 2026-04-15

Table 3 : 15 Minute Average Concentrations (AM)

	Avg. 2943 - PM10 (µg/m³)	Avg. 3061 - PM10 (µg/m³)	Avg. 2997 - PM10 (µg/m³)	Avg. 2996 - PM10 (µg/m³)	Avg. 2943 - PM2.5 (µg/m³)	Avg. 3061 - PM2.5 (µg/m³)	Avg. 2996 - PM2.5 (µg/m³)	Avg. 2997 - PM2.5 (µg/m³)	Avg. 2943 - H2S (PPM)	Avg. 3061 - H2S (PPM)	Avg. 2996 - H2S (PPM)	Avg. 2997 - H2S (PPM)
00:00:00	17.0	11.5	15.4	14.6	7.0	5.9	6.2	6.0	0.069	0.003	0.102	0.015
00:15:00	16.5	11.6	13.2	24.3	6.9	6.0	8.0	5.7	0.059	0.001	0.094	0.008
00:30:00	13.9	11.1	12.4	19.4	6.5	5.9	7.3	5.6	0.048	0.001	0.088	0.001
00:45:00	12.6	11.1	13.0	16.4	6.2	5.9	6.7	5.6	0.034	0.000	0.081	0.000
01:00:00	11.6	11.0	11.6	16.8	5.9	5.8	6.5	5.4	0.031	0.000	0.072	0.000
01:15:00	10.5	10.4	12.2	29.3	5.6	5.8	8.9	5.4	0.023	0.000	0.065	0.000
01:30:00	10.7	10.9	16.9	28.6	5.5	6.0	9.3	6.4	0.013	0.000	0.059	0.000
01:45:00	10.0	10.6	18.4	29.8	5.3	5.9	9.3	6.9	0.005	0.000	0.053	0.000
02:00:00	11.4	10.5	14.0	21.4	5.7	5.9	7.6	6.0	0.000	0.000	0.049	0.000
02:15:00	12.7	10.1	11.3	15.7	6.0	5.7	6.5	5.2	0.000	0.000	0.044	0.000
02:30:00	13.4	9.8	10.5	14.3	6.1	5.6	6.3	5.0	0.000	0.000	0.038	0.000
02:45:00	12.7	9.9	10.6	13.3	6.0	5.5	6.1	4.9	0.000	0.000	0.034	0.000
03:00:00	11.4	9.8	10.1	10.8	5.8	5.4	5.4	4.9	0.000	0.000	0.031	0.000
03:15:00	10.3	9.7	10.0	10.3	5.5	5.4	5.3	4.9	0.000	0.000	0.027	0.000
03:30:00	10.4	8.8	9.3	11.3	5.3	5.1	5.6	4.7	0.000	0.000	0.023	0.000
03:45:00	9.6	8.9	9.4	10.1	5.1	5.1	5.1	4.7	0.000	0.000	0.022	0.000
04:00:00	9.0	8.9	9.1	10.0	5.0	5.1	5.1	4.5	0.000	0.000	0.020	0.000
04:15:00	8.9	7.8	9.1	9.6	4.7	4.5	5.0	4.8	0.000	0.000	0.016	0.000
04:30:00	8.7	8.3	8.9	9.3	4.9	4.9	4.8	4.5	0.000	0.000	0.015	0.000
04:45:00	9.6	7.2	8.7	8.9	5.1	4.3	4.8	4.4	0.000	0.000	0.014	0.000
05:00:00	9.0	7.6	8.4	8.3	4.9	4.4	4.5	4.4	0.000	0.000	0.010	0.000
05:15:00	8.8	8.0	8.4	8.6	4.8	4.5	4.6	4.4	0.000	0.000	0.009	0.000
05:30:00	8.4	7.9	7.7	8.7	4.6	4.6	4.5	4.2	0.000	0.000	0.007	0.000
05:45:00	8.4	7.5	7.1	8.5	4.6	4.4	4.4	4.2	0.000	0.000	0.006	0.000
06:00:00	8.5	8.6	8.0	8.1	4.3	4.6	4.3	4.3	0.000	0.000	0.006	0.000
06:15:00	8.3	8.4	7.7	8.0	4.5	4.6	4.1	4.2	0.000	0.000	0.004	0.000
06:30:00	8.3	9.1	7.6	8.0	4.5	4.8	4.1	4.0	0.000	0.000	0.004	0.000
06:45:00	9.8	9.6	7.4	8.4	4.7	4.8	4.3	4.0	0.000	0.000	0.001	0.000
07:00:00	9.2	20.7	7.6	7.9	4.6	6.1	4.2	4.1	0.000	0.000	0.001	0.000
07:15:00	9.1	11.9	7.8	13.6	4.7	5.4	4.9	4.1	0.000	0.000	0.000	0.000
07:30:00	55.5	10.6	7.8	20.2	12.0	5.2	6.0	4.1	0.000	0.000	0.002	0.000
07:45:00	11.5	12.8	12.8	12.4	5.3	5.7	5.3	5.4	0.000	0.000	0.001	0.000
08:00:00	15.6	14.2	21.5	14.3	5.9	6.2	6.3	7.2	0.000	0.000	0.000	0.000
08:15:00	21.4	12.7	28.2	20.3	7.2	5.9	7.9	8.7	0.000	0.000	0.000	0.000
08:30:00	67.2	18.2	26.1	22.5	13.6	7.0	9.2	9.0	0.000	0.000	0.000	0.000
08:45:00	26.9	17.1	21.1	22.4	11.3	7.9	10.0	8.7	0.000	0.000	0.000	0.000
09:00:00	26.3	20.5	24.7	22.3	11.2	9.6	10.3	9.5	0.000	0.000	0.000	0.000
09:15:00	24.5	20.3	21.6	21.6	10.5	9.8	9.9	9.9	0.000	0.000	0.000	0.000
09:30:00	23.1	19.6	24.5	19.4	9.7	9.4	9.0	9.3	0.000	0.000	0.000	0.000
09:45:00	21.8	18.8	18.8	26.1	9.4	9.1	9.9	8.7	0.000	0.000	0.000	0.000
10:00:00	20.9	18.8	19.1	19.9	9.4	9.1	8.9	8.8	0.000	0.000	0.000	0.000
10:15:00	19.5	21.5	19.1	24.3	8.8	10.6	9.4	8.6	0.000	0.000	0.000	0.000
10:30:00	19.7	17.8	17.3	18.0	8.8	8.5	8.2	8.2	0.000	0.000	0.000	0.003
10:45:00	19.3	16.5	17.0	19.1	8.6	7.6	8.4	8.1	0.000	0.000	0.000	0.003
11:00:00	18.8	17.2	16.5	17.4	8.6	8.3	8.2	7.8	0.000	0.000	0.000	0.000
11:15:00	19.0	17.5	16.4	17.6	8.7	8.4	8.1	7.8	0.000	0.000	0.000	0.000
11:30:00	18.3	17.1	16.3	17.6	8.4	8.2	8.0	7.8	0.000	0.000	0.000	0.000
11:45:00	18.8	16.4	15.7	16.8	8.5	8.1	7.9	7.5	0.000	0.000	0.000	0.000



DAILY AIR MONITORING REPORT

Florence C&D Landfill – Air Monitoring

Date : 2026-04-15

Table 3 : 15 Minute Average Concentrations (PM)

	Avg. 2943 - PM10 (µg/m³)	Avg. 3061 - PM10 (µg/m³)	Avg. 2997 - PM10 (µg/m³)	Avg. 2996 - PM10 (µg/m³)	Avg. 2943 - PM2.5 (µg/m³)	Avg. 3061 - PM2.5 (µg/m³)	Avg. 2996 - PM2.5 (µg/m³)	Avg. 2997 - PM2.5 (µg/m³)	Avg. 2943 - H2S (PPM)	Avg. 3061 - H2S (PPM)	Avg. 2996 - H2S (PPM)	Avg. 2997 - H2S (PPM)
12:00:00	22.3	17.0	14.5	15.8	8.5	8.2	7.5	7.2	0.000	0.000	0.000	0.000
12:15:00	18.4	17.1	15.3	18.0	8.3	8.3	7.9	7.5	0.000	0.000	0.000	0.000
12:30:00	17.5	15.9	15.4	18.7	8.1	7.9	8.0	7.6	0.000	0.000	0.000	0.000
12:45:00	15.2	14.9	15.6	13.5	7.1	7.5	6.6	7.2	0.000	0.000	0.000	0.000
13:00:00	17.2	16.7	14.2	14.4	6.9	7.5	7.1	6.9	0.000	0.000	0.000	0.000
13:15:00	46.2	14.4	13.3	14.2	11.0	7.2	7.0	6.8	0.000	0.000	0.000	0.000
13:30:00	15.5	14.2	13.2	13.5	7.0	7.1	6.8	6.4	0.000	0.000	0.000	0.000
13:45:00	13.0	13.5	11.7	12.8	6.3	6.6	6.3	5.9	0.000	0.000	0.000	0.000



DAILY AIR MONITORING REPORT
Florence C&D Landfill – Air Monitoring

Date : 2026-04-15

Table 4 : Summary of Exceedances (greater than Action Level) - *None*

Table 4 : Summary of Exceedances (greater than Action Level) - <i>None</i>	
--	--